

Banlaw Evacuation Couplings (BEC)

Banlaw Evacuation Couplings transform waste fluid removal practices. Using just one coupling, service teams can connect to multiple Banlaw Flush Face Receivers. Waste products are evacuated using a vacuum rather than gravity to reduce fluid removal times.



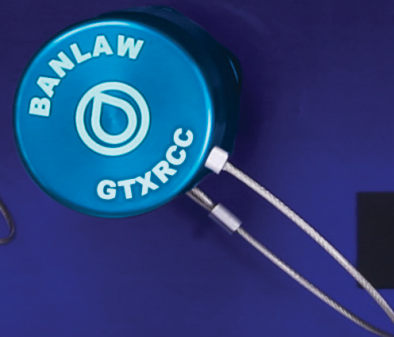
Using just one coupling, service teams can connect to all the Banlaw Flush Face Receivers from size 1 to size 11.

GREASE

SAE 15W



COOLANT



SAE 30



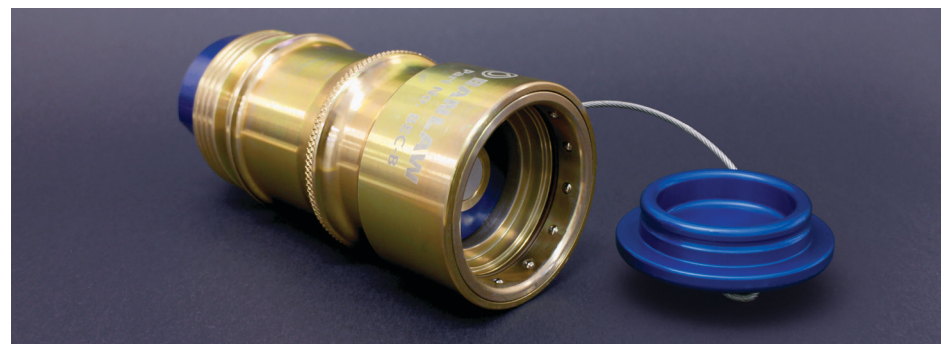
BEC



The BEC has a fluid-tight connection, which prevents spillage during the evacuation process. It is Dry Break and incorporates a dependable ball-lock latching mechanism. As with the entire LubeCentral range, the BEC fluid path is optimised for higher transfer rates.

BEC can be connected and disconnected while the vacuum pump remains running due to its (patent pending*) internal manual open/closed valve. The BEC also includes unique safety features. It cannot be disconnected while the internal valve is open, and will not allow reverse flow. No waste products can be mistakenly pumped back into your machines with a BEC.

BEC-B



The BEC-B does not include the manual open/close valve found in our BEC. Because of this, there is no requirement to 'twist' the BEC-B to unlock the fluid path. It is designed for tighter service boxes, where there isn't room for a tool as well as a pair of hands.

BEC-B includes the same dependable ball-lock latching mechanism as the rest of the range, along with a fluid path optimised for higher transfer rates. Just like the original BEC, our BEC-B incorporates a check valve so waste products cannot be mistakenly pumped back into your machines.



Americas

Telephone +1 385 259 0456

Email americasales@banlaw.com

537 West 600 South #800

Salt Lake City

Utah 84101 USA

Rest of the world

Telephone +61 2 4922 6300

Email sales@banlaw.com

19 Metro Ct

Gateshead

NSW 2290 Australia

banlaw.com